

POLAR LAMINATORS

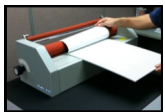
Mounting and Laminating fast, "No Special Skills" required! Convert your prints into profitable signs and displays using Polar Laminators and Polar fabricated boards and films.

Polar Laminators deliver what you need



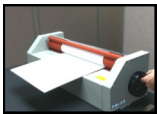
- Easy to learn laminating process insures consistent results
- Professional Results for quality which yields profits
- Compact manual design fits anywhere in your office
- Ready to use producing high quality finished prints from the start

Designed with unique features to make laminating easy



Insert
Print

Roll Down
to laminate



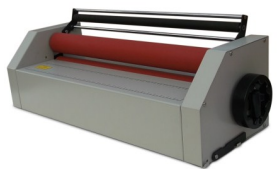
The Polar Media Guide is like an extra set of hands

The Media Guide allows one person to roll down prints or laminate films with **no wrinkles or bubbles ever!** The Media Guide is a roller which fits on top of the laminators rollers. **(Patent Applied For)** To use, place your print between the rollers and the Media Guide, close to secure and hold your print in the perfect position for laminating. Then simply roll down the print. View our videos to see how easy Polar laminating is to do!

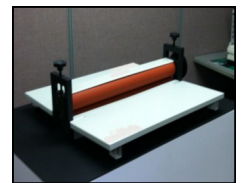
Polar Laminators use quality components

- **Hard silicon rollers** apply maximum pressure/easy cleaning too!
- **Sealed bearings** smooth turning action
- **Heavy gauge steel construction** for durability
- **Alignment Guides** for consistently positioned prints

The same as laminators costing thousands of Dollars



POLAR SMART



POLAR CUB

Make these signs and more with the Polar System

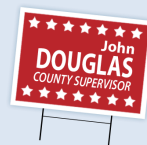


Mounted and Laminated Posters with Polar Pouch Boards.

Add value to your prints. Mounting keeps prints flat and easy to read. Laminating enhances the finish while protecting your print from fading and handling. **For short term needs, use Polar adhesive boards.**

Outdoor signs with Polar Corrugated Boards.

Use corrugated plastic boards for outdoor displays. Choose from economical Polar boards or Polar Pouch Boards with laminate for a lasting display.



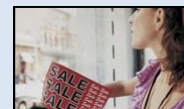
Banners and working prints with Polar films and pouches.

Use Polar Pouches to encapsulate prints with film on both sides or Polar Film Sheets to laminate one side of a banner for protection from abrasion, fading and handling.



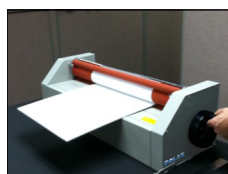
Window Graphics with Polar Window Films

The fastest growing segment of wide format display. Use Polar Window film to make prints to be applied to windows by hand, easy removal leaving no adhesive residue on the window.



POLAR LAMINATORS

POLAR SMART



Polar Media Guide

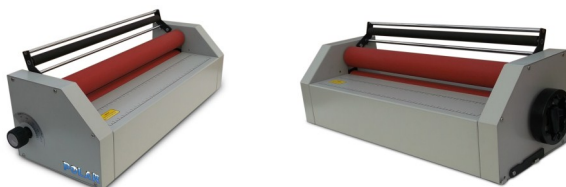
Hold prints in position to laminate. To use insert print between Media Guide and Roll and close to process.



Polar Roll Cradle

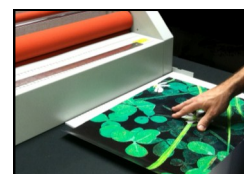
Dispense roll film. Open Media Guide and place roll film between top roll and Media Guide.

Easy to use, Professional, Profitable, Affordable



Features

- 25" wide
- Roll Print Media Guide to process prints (**Patent Pending**)
- Built-in Align Corner for print registration (Polar Exclusive)
- Single Roller Height adjustment
- Uses all boards up to 1/2" thick
- Roll Cradle uses films on industry standard 3" cores
- High quality silicone rollers with smooth turning sealed bearings
- Includes a straightedge and X-acto® foam board cutter
- Rugged steel construction (One year Warranty)
- Compact Size 28"x12"x10" weight 70 pounds



The Polar Align Corner

To registered prints pull out the squaring edge. Place your board and print in the corner and tack together.

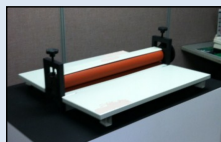


Single Roll Height Knob

Set the same roll height every time. It's easy to insure consistent Parallel roll pressure.

Polar Smart 25" Laminator (CL25PS) \$999

POLAR CUB

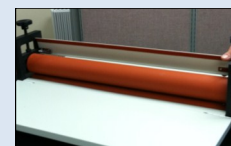


- 25" wide. (38" wide available Q1 2012)
- Print Media Guide Silicon Bar
- Uses all boards up to 1" thick
- Quality non-stick hard silicon rollers give professional results
- Includes Alignment Guide, straightedge & X-acto foam board cutter



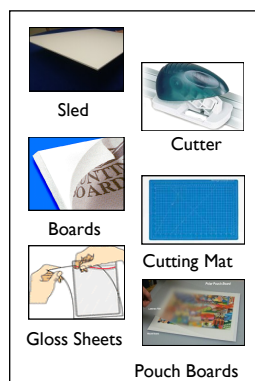
Polar Cub 25" Laminator (CL25CUB) \$499

Polar Cub 38" Laminator (CL38CUB) \$799



Polar Media Guide

Save with our Complete Starter Kits



Everything you need to start Mounting and Laminating

Our kits come complete with foam board cutters and supplies. Everything you need to start finishing your prints for display. **You save over 15%. And best of all, if you sell all the included supplies at market prices, you'll pay for the kit!**

Starter Kits:

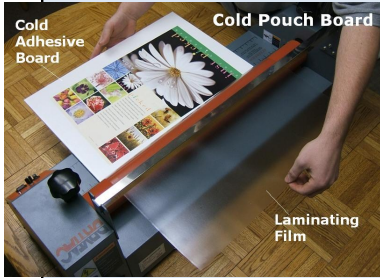
- Polar laminator
- Image Edge 48" Foam Board Cutter
- 24"x36: Self-Healing Cutting Mat
- 24"x36" Adhesive Foam Board (10 sheets)
- 24.5"x36.5" Gloss Pouch Boards (10 sheets)
- 20" x 30.5" Matte Polar Pouch Boards (10 sheets)
- 20" x 30.5" Gloss Film Sheets and sled (10 sheets)

Polar Cub Kit (CL25CUB-BR) \$ 965

Polar Smart Kit (CL25PS-BR) \$ 1,395

Mount and Laminate Inkjet Prints

POLAR Pouch Boards

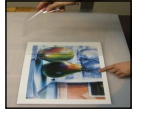


Polar Pouch Boards are cold adhesive boards with attached laminate film. Use Polar Pouch Boards to easily adhere a print to a rigid board and laminate your graphic in one process. **Patent Applied For.**

Polar Pouch Boards feature

- Permanent cold pressure sensitive adhesives
- Gloss or Matte UV laminate
- ¼" Smooth leading edge

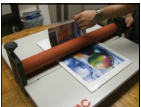
To Use



Lift film, position print and laminate film to print



Raise print and remove cover sheet To expose adhesive



Roll down laminated print to adhere print to board

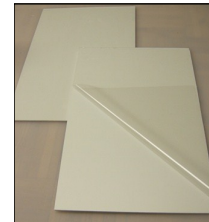


Display your mounted and laminated print

Foam – Polar Pouch Board

3/16" thick white foam board. Foam board has 'memory' which resists dents. Lightweight and easy to cut, the industry standard for framing prints and indoor display requirements. (10 boards/box)

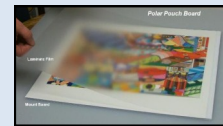
	<u>Size</u>	<u>Gloss</u>	<u>Matte</u>	<u>Price</u>
Wide Format	24"x36.5"	FPB2436G	FPB2436M	\$145.00
	20"x30.5"	FPB2030G	FPB2030M	\$110.00
	18"x24.5"	FPB1824G	FPB1824M	\$ 87.50
Photo and Document Sizes	16"x20.5"	FPB1620G	FPB1620M	\$ 82.00
	13"x19.5"	FPB1319G	FPB1319M	\$ 57.50
	11"x17.5"	FPB1117G	FPB1117M	\$ 39.95
	11"x14.5"	FPB1114G	FPB1114M	\$ 35.95
	8.5"x11.5"	FPB8511G	FPB8511M	\$ 25.49
	8"x10.5"	FPB810G	FPB810M	\$ 22.49



Gator® – Polar Pouch Board

3/16" thick white Gator board (black available). Gator is made with a wood veneer surface and is durable with minimal bowing. Use for displays which will be handled repeatedly such as tradeshow.

<u>Size</u>	<u>Gloss</u>	<u>Matte</u>	<u>Price</u>
24"x36.5"	GPB2436G	GPB2436M	\$349
18"x24.5"	GPB1824G	GPB1824M	\$185



Plastic – Polar Pouch Board

4mm thick white corrugated plastic board with gloss laminate for short-term outdoor use. Corrugated flutes run vertically and the standard sizes of cold pouch board are 'landscape' for using sign holders.



<u>Item</u>	<u>Size</u>	<u>Finish</u>	<u>Price</u>
PPB3624G	36.5"x24"	Gloss	\$162.50
PPB2418G	24.5"x18"	Gloss	\$ 87.50
PPB1812G	18.5"x12"	Gloss	\$ 56.95



Pouch Boards

Video

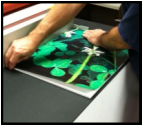
Metal 'H' Sign Stakes For corrugated boards. Sign stakes insert into the flutes of corrugated boards. 10"W x 30"H. 10/pack (US-F57438) **\$24.95**

Polar Pouch Boards available in Black by Special Order

POLAR Mount Boards

The easiest way to adhere a print to a rigid backing surface

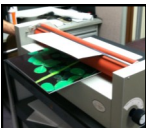
To Use



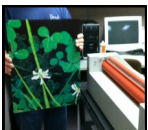
Align and Tack Print



Insert print in Polar Laminator



Roll Down Print to Mount



Display your print

Self-Adhesive Foam Boards

Foam board with a pressure sensitive or "cold" initially removable adhesive ready for mounting prints. The adhesive is designed for easy alignment. Boards are 3/16" thick. Black boards available.



Size	Quantity	Item Nr.	Price
8" x 10"	10	550551R	\$ 12.75
8.5" x 11"	10	550553R	\$ 13.95
11" x 14"	10	550555R	\$ 25.95
11" x 17"	10	550557R	\$ 26.75
13" x 19"	10	550569R	\$ 34.95
16" x 20"	10	550558R	\$ 46.95
20" x 30"	10	550445	\$ 69.95
24" x 36"	10	550454-MED	\$ 92.50

Self-Adhesive Gator® Board

Wood surfaced Gator board with a pressure sensitive or "cold" permanent adhesive. Boards are 3/16" thick.

Size	Quantity	Item Nr.	Price
18" x 24"	10	550453G	\$ 299.95
24" x 36"	10	550454G	\$ 157.50

Self-Adhesive Corrugated Plastic

White corrugated plastic board with a pressure sensitive or "cold" adhesive ready for mounting prints. 4 mm thick. Other colors available by Special Order. When sizing, the 1st dimension is the width and the 2nd dimension is the height of the board. The "flutes" always run from the top to bottom vertically on the board for use with metal sign stakes (below). Available with adhesive on both sides.



Item	Size	Quantity	Price
CWSA1812	18" x 12"	10	\$ 49.95
CWSA2418	24" x 18"	10	\$ 75.95
CWSA3624	36" x 24"	10	\$ 145.95
Step Stakes	10W X 30H	10	\$24.95



Mounting and Laminating Films

Double-sided adhesive Sheets High quality double-sided film with silicon liners on both sides. Adhesive is hi-tack permanent. (10 sheets/pack)

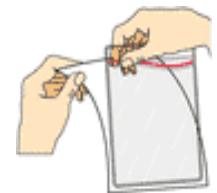
<u>8.5"x11"</u>	<u>11"x17"</u>	<u>18"x24"</u>	<u>24"x36"</u>
\$11.50 (970003)	\$23.75 (970004)	\$58.50 (970023)	\$99.95 (970024)

Over-Laminate Films Sheets Laminating film cut in ready to use sheets. Sheets are packed 10/box and include a 'Sled' or non-stick Carrier Board.

Size	Indoor	Outdoor	Window
<u>20.5"x31"</u>	<u>24.5"x36.5"</u>	<u>24.5"x36.5"</u>	<u>24.5"x36.5"</u>
Gloss \$49 (GU2031)	\$70 (GU2437)	\$149 (180401)	\$175 (180408)

Encapsulating Pouches Two sheets of film joined at one end. Film protection on both sides of a print protects from handling and moisture. Gloss Finish. 10/box.

<u>9"x12"</u>	<u>12"x18"</u>	<u>24.5"x37"</u>
\$23.50 (970003)	\$104.95 (970004)	\$149.95 (970023)



Videos



Mount boards



Film sheets